



The
Total
Sorption
Solution

SURFACE
MEASUREMENT
SYSTEMS



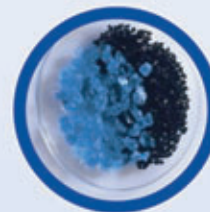
SURFACE ENERGY ANALYZER

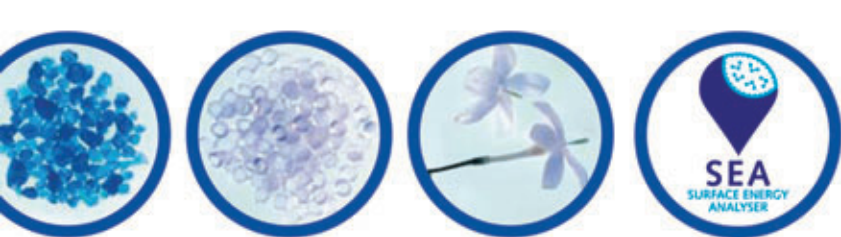


Surface Measurement Systems proudly announces the latest development in chromatographic sorption technology. The new Surface Energy Analyzer (SEA) was developed utilizing the knowledge gained from over 10 years of experience with inverse gas chromatography technology and applications. The SEA allows access to a wide range of surface and bulk properties of solids, powders, particulates, fibers, and films.

KEY PROPERTIES MEASURED

- > Surface Energy and Acid-Base Parameters
- > Energetic Heterogeneity Mapping
- > Batch-to-Batch Variations in Surface Chemistry
- > Glass Transition Temperatures
- > Adhesion – Cohesion Thermodynamics
- > Solubility Parameters and Crosslink Density



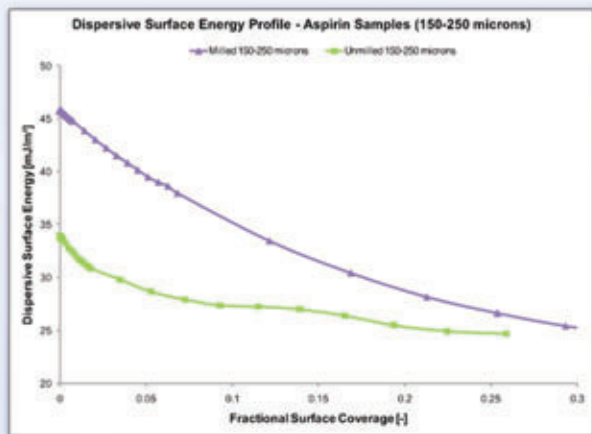


KEY FEATURES AND OPTIONS

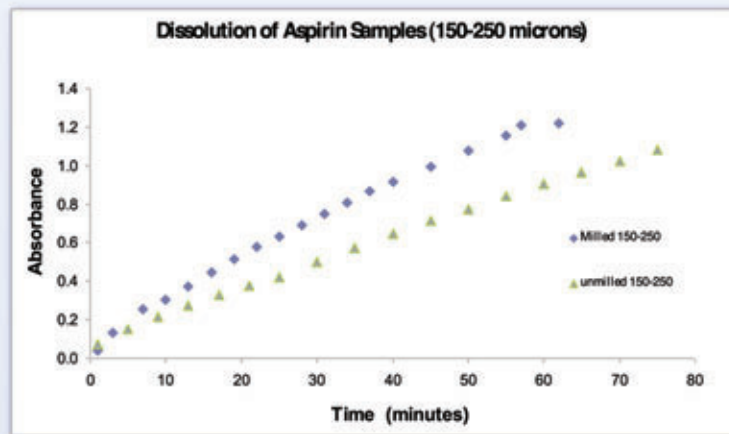
- > 12 Solvent Reservoirs
- > 15 to 150 °C Column Temperature Range
- > Optional High Temperature Column Oven to 500 °C
- > Variable Injection Sizes (1:4000 ratio)
- > Optional Thin Film Accessory
- > Optional Humidity Control
- > Small Footprint: 450mm (18") Width x 450mm Depth (18") x 700mm (27.5") Height

EXAMPLE APPLICATION DATA

UNMILLED VS. MILLED ASPIRIN



Milling creates higher energy (more reactive) surface sites



Higher energy sites lead to faster tablet dissolution rates

Head Office:
Surface Measurement Systems Ltd
5 Wharfside, Rosemont Road
London HA0 4PE, UK

Tel: +44 (0)20 8795 9400
Fax: +44 (0)20 8795 9401
Email: sales@smsuk.co.uk

United States Office:
Surface Measurement Systems NA
2125 28th Street SW, Suite 1
Allentown, PA 18103 USA

Tel: +1 610 798 8299
Fax: +1 610 798 0334
Email: sales@smsna.com

